

Hobelmesserköpfe

02_2012

**alle
Preise auf
Anfrage**

2012

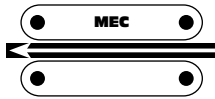
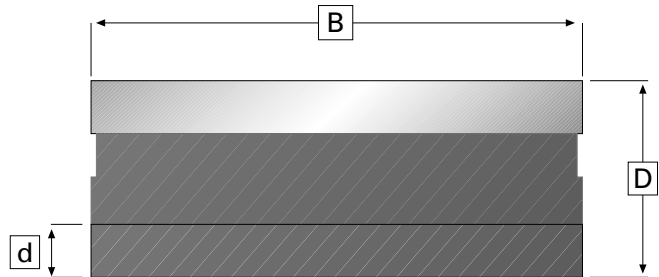
conax UG · Ehrensteinstr. 16 · 04105 Leipzig · Tel. 0341/5628820 · Fax 0341/5628823

www.conax.de · info@conax.de



TESTA PER PIALlare COMPLETA DI COLTELLI HS RIAFFILABILI

PLANING CUTTERHEAD SUPPLIED WITH HS KNIVES TO BE RE-SHARPENED
 PORTE - OUTIL À RABOTER AVEC COUTEAUX AFFUTABLES EN HS
 HOBELMESSERKOPF KOMPLETT MIT SCHLEIFBAREN HS-MESSERN
 CABEZAL PARA CEPILLAR EQUIPADO CON CUCHILLAS REAFILABLES DE HS



ALU

D. 100 n. max 9000
 D. 125 n. max 7000

Art.	D	B	d	Z	Cod*
101.001.0000	100	120	35	3	41I
101.002.0000	100	130	35	3	41J
101.003.0000	100	180	35	3	43F
101.004.0000	100	190	35	3	43I
101.005.0000	125	100	40	4	42D
101.006.0000	125	120	40	4	42I
101.007.0000	125	130	40	4	42J
101.008.0000	125	140	40	4	43C
101.009.0000	125	150	40	4	43F
101.010.0000	125	170	40	4	44I
101.011.0000	125	180	40	4	45A
101.012.0000	125	190	40	4	45D
101.013.0000	125	220	40	4	46E
101.014.0000	125	230	40	4	46H
101.015.0000	125	240	40	4	47E
101.016.0000	125	250	40	4	47H

- PER MISURE DIVERSE VEDERE ART. 101/S
- PRICES FOR DIFFERENT MEASURES, SEE TABLE ART. 101/S
- POUR MESURES DIFFÉRENTES, VOIR TABLEAU DES PRIX ART. 101/S
- FÜR ANDERE ABMESSUNGEN, SIEHE TABELLE DES ART.101/S
- PRECIOS PARA MEDIDAS DIFERENTES VER TABLA ART. 101/S

RICAMBI · SPARE PARTS · PIECES DE RECHANGE · ERSATZTEILE · RECAMBIOS



Art.	Cod*
300.D08.0820	10C

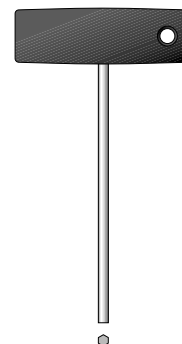


Art.	Cod*
300.E05.0175	10B



Art.	Cod*
300.E12.0018	10E

Art. 500.000.0000

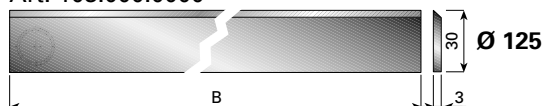


Art.	Cod*
200.D04.0E04	11E

Art. 103.000.0000



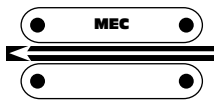
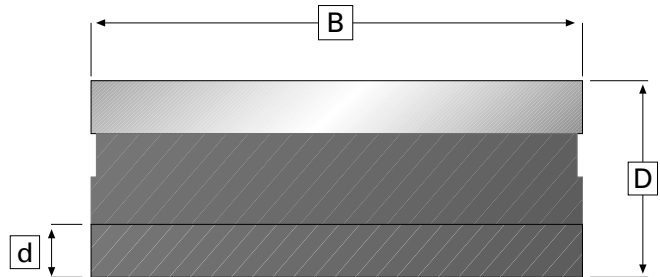
Art. 103.000.0000





TESTA PER PIALLARE SU RICHIESTA, COMPLETA DI COLTELLI HS RIAFFILABILI

PLANING CUTTERHEAD ON REQUEST SUPPLIED WITH HS KNIVES TO BE RE-SHARPENED
 PORTE - OUTIL À RABOTER AVEC COUTEAUX AFFUTABLES EN HS SUR DEMANDE
 HOBELMESSERKOPF KOMPLETT MIT SCHLEIFBAREN HS-MESSERN IN SONDERFERTIGUNG
 CABEZAL PARA CEPILLAR EQUIPADO CON CUCHILLAS REAFILABLES DE HS SOBRE DEMANDA



ALU

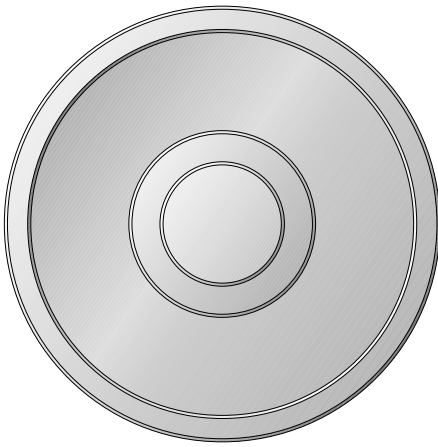
D. 100 n. max 9000
D. 125 n. max 7000
D. 140 n. max 6000

Art.	D	B	Z	Cod*
101.S01.0000	120 - 125	60	4	42D
101.S02.0000	120 - 125	80	4	42J
101.S03.0000	120 - 125	100	4	43F
101.S04.0000	120 - 125	120	4	44B
101.S05.0000	120 - 125	130	4	44D
101.S06.0000	120 - 125	140	4	44G
101.S07.0000	120 - 125	150	4	45A
101.S08.0000	120 - 125	160	4	45I
101.S09.0000	120 - 125	170	4	46F
101.S10.0000	120 - 125	180	4	46I
101.S11.0000	120 - 125	190	4	47B
101.S12.0000	120 - 125	200	4	47G
101.S13.0000	120 - 125	210	4	48B
101.S14.0000	120 - 125	220	4	48F
101.S15.0000	120 - 125	230	4	48I
101.S16.0000	120 - 125	240	4	49H
101.S17.0000	120 - 125	250	4	50G
101.S18.0000	140	60	4	42H
101.S19.0000	140	80	4	43D
101.S20.0000	140	100	4	44A
101.S21.0000	140	120	4	44F
101.S22.0000	140	130	4	44I
101.S23.0000	140	140	4	45B
101.S24.0000	140	150	4	45G
101.S25.0000	140	160	4	46E
101.S26.0000	140	170	4	47C
101.S27.0000	140	180	4	47F
101.S28.0000	140	190	4	47J
101.S29.0000	140	200	4	48E
101.S30.0000	140	210	4	49A
101.S31.0000	140	220	4	49E
101.S32.0000	140	230	4	49J

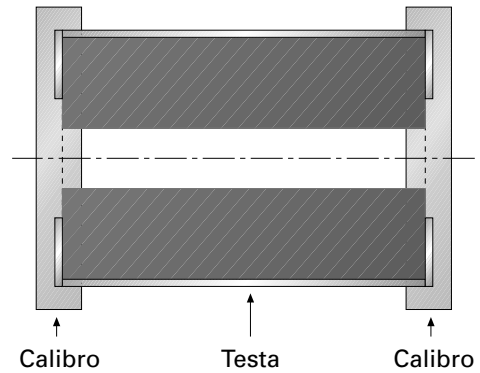
- PER MISURE DIVERSE E CORPO IN ACCIAIO CHIEDERE OFFERTA
- FOR DIFFERENT MEASURES AND STEEL BODY, ASK FOR AN OFFER
- POUR D'AUTRES MESURES ET CORPS EN ACIER, DEMANDER UNE OFFRE
- FÜR ANDERE ABMESSUNGEN UND STHALKÖRPER BITTE ANGEBOТ EINHOLEN
- PARA MEDIDAS DIFERENTES Y CAJA DE ACERO, SOLICITAR OFERTA

COPPIA CALIBRI REGISTRA COLTELLI PER ART. 101

BLADE CENTERING PER PAIR FOR ART. 101
 CALIBRES POUR LE CENTRAGE DES COUTEAUX, LA COUPLE POUR ART.101
 ZENTRIERSCHEIBEN FÜR DIE MESSERDES ARTIKELS 101
 CALIBRES PARA CENTRAR LAS CUCHILLAS, EL PAR, PARA ART. 101



ALU



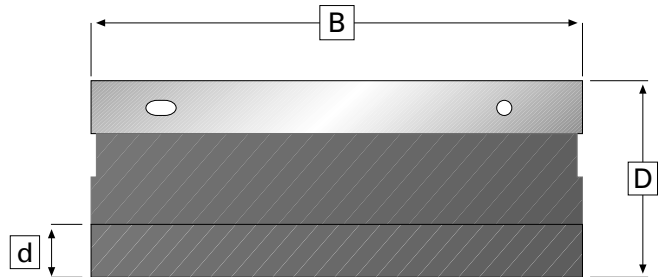
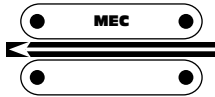
Art.	D	d	Cod*
102.001.0000	100	35	26A
102.002.0000	125	40	26I
102.003.0000	140	40	27F

- PER MISURE DIVERSE CHIEDERE OFFERTA
- FOR DIFFERENT MEASURES, ASK FOR AN OFFER
- POUR D'AUTRES MESURES, DEMANDER UNE OFFRE
- FÜR ANDERE ABMESSUNGEN BITTE EIN ANGEBOT EINHOLEN
- PARA MEDIDAS DIFERENTES, SOLICITAR OFERTA



TESTA PER PIALLARE COMPLETA DI COLTELLI REVERSIBILI IN HS

PLANNING CUTTERHEAD SUPPLIED WITH DISPOSABLE HS KNIVES
 PORTE - OUTIL À RABOTER AVEC COUTEAUX RÉVERSIBLES EN HS
 HOBELMESSERKOPF KOMPLETT MIT HS WENDEMESSER
 CABEZAL PARA CEPILLAR EQUIPADO CON CUCHILLAS REVERSIBLES EN HS



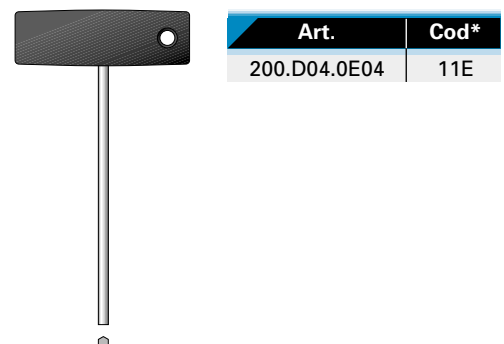
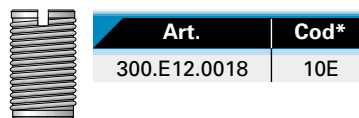
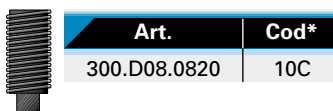
ALU

D. 100 n. max 10.000
 D. 125 n. max 8000

Art.	D	B	d	Z	Cod*
110.001.0000	100	130	35	3	43B
110.002.0000	100	190	35	3	43F
110.003.0000	125	100	40	4	42I
110.004.0000	125	120	40	4	43F
110.005.0000	125	130	40	4	43G
110.006.0000	125	140	40	4	43J
110.007.0000	125	150	40	4	44D
110.008.0000	125	170	40	4	45G
110.009.0000	125	180	40	4	45J
110.010.0000	125	190	40	4	46C
110.011.0000	125	220	40	4	47F
110.012.0000	125	230	40	4	47I
110.013.0000	125	240	40	4	48G
110.014.0000	125	250	40	4	48J

- PER MISURE DIVERSE VEDERE ART. 110/S
- PRICES FOR DIFFERENT MEASURES, SEE TABLE ART. 110/S
- POUR MESURES DIFFÉRENTES, VOIR TABLEAU DES PRIX ART. 110/S
- FÜR ANDERE ABMESSUNGEN SIEHE TABELLE DES ART. 110/S
- PRECIOS PARA MEDIDAS DIFERENTES VER TABLA ART. 110/S

RICAMBI · SPARE PARTS · PIECES DE RECHANGE · ERSATZTEILE · RECAMBIOS



Art. 500.F00.0000



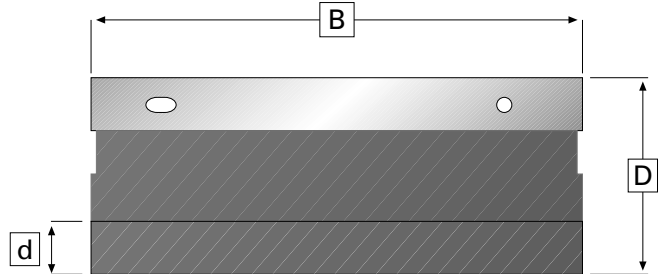
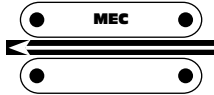
Art. 111.000.0000





TESTA PER PIALLARE SU RICHIESTA, COMPLETA DI COLTELLI HS REVERSIBILI

PLANING CUTTERHEAD ON REQUEST WITH DISPOSABLE HS KNIVES
 PORTE - OUTIL À RABOTER AVEC COUTEAUX RÉVERSIBLES EN HS SUR DEMANDE
 HOBELMESSERKOPF KOMPLETT MIT HS WENDEMESSER IN SONDERFERTIGUNG
 CABEZAL PARA CEPILLAR SOBRE DOMANDA EQUIPADO CON CUCHILLAS REVERSIBLES EN HS



ALU

D. 125 n. max 8000
 D. 140 n. max 7000

Art.	D	B	Z	Cod*
110.S01.0000	120 - 125	60	4	42J
110.S02.0000	120 - 125	80	4	43G
110.S03.0000	120 - 125	100	4	44D
110.S04.0000	120 - 125	120	4	44J
110.S05.0000	120 - 125	130	4	45B
110.S06.0000	120 - 125	140	4	45F
110.S07.0000	120 - 125	150	4	45J
110.S08.0000	120 - 125	160	4	46I
110.S09.0000	120 - 125	170	4	47G
110.S10.0000	120 - 125	180	4	47J
110.S11.0000	120 - 125	190	4	48C
110.S12.0000	120 - 125	200	4	48I
110.S13.0000	120 - 125	210	4	49D
110.S14.0000	120 - 125	220	4	49H
110.S15.0000	120 - 125	230	4	50B
110.S16.0000	120 - 125	240	4	51B
110.S17.0000	120 - 125	250	4	51G
110.S18.0000	140	60	4	43D
110.S19.0000	140	80	4	44A
110.S20.0000	140	100	4	44I
110.S21.0000	140	120	4	45E
110.S22.0000	140	130	4	45H
110.S23.0000	140	140	4	46A
110.S24.0000	140	150	4	46G
110.S25.0000	140	160	4	47F
110.S26.0000	140	170	4	48E
110.S27.0000	140	180	4	48H
110.S28.0000	140	190	4	49B
110.S29.0000	140	200	4	49G
110.S30.0000	140	210	4	50D
110.S31.0000	140	220	4	50I
110.S32.0000	140	230	4	51D

- PER MISURE DIVERSE E CORPO IN ACCIAIO CHIEDERE OFFERTA
- FOR DIFFERENT MEASURES AND STEEL BODY, ASK FOR AN OFFER
- POUR D'AUTRES MESURES ET CORPS EN ACIER, DEMANDER UNE OFFRE
- FÜR ANDERE ABMESSUNGEN UND STAHLKÖRPER BITTE ANGEBOТ EINHOLEN
- PARA MEDIDAS DIFERENTES Y CAJA DE ACERO, SOLICITAR OFERTA



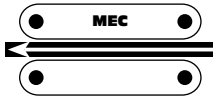
TESTA RASANTE PER ART. 101/110/104/115

PRE-GROOVING CUTTERHEAD FOR ART. 101/110/104/115

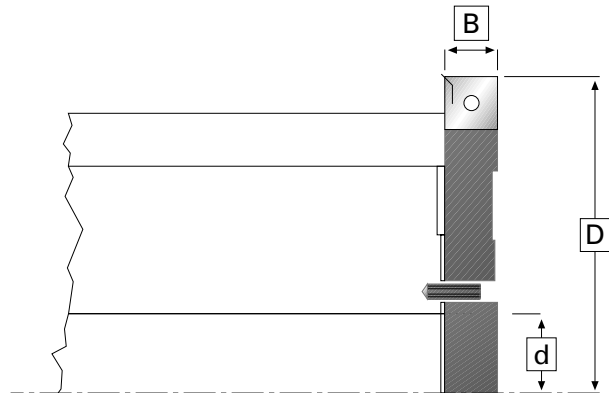
PORTE OUTIL DE PRÉ DÉGAUCHISSAGE POUR ART. 101/110/104/115

MESSERKOPF FÜR FÜHRUNGFAZ FÜR ART. 101/110/104/115

CABEZAL PARA GALCE GUÍA PARA ART. 101/110/104/115



D. 125 n. max 11000
 D. 145 n. max 9000
 D. 154 n. max 8000
 D. 170 n. max 7000



Art.	D	B	Z	V	d	Cod*
108.001.0000	125	12,5	2	2	35	40E
108.002.0000	145	12,5	2	2	40	40F
108.003.0000	154	12,5	2	2	40	40G
108.004.0000	170	12,5	2	2	40	40I

- PER MISURE DIVERSE CHIEDERE OFFERTA
- FOR DIFFERENT MEASURES, ASK FOR AN OFFER
- POUR D'AUTRES MESURES, DEMANDER UNE OFFRE
- FÜR ANDERE ABMESSUNGEN BITTE EIN ANGEBOT VERLANGEN
- PARA MEDIDAS DIFERENTES, SOLICITAR OFERTA

RICAMBI · SPARE PARTS · PIECES DE RECHANGE · ERSATZTEILE · RECAMBIOS



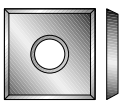
Art.	Cod*
300.D06.0616	10C



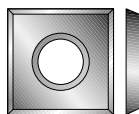
Art.	Cod*
300.C05.0510	10E



Art.	Cod*
500.B00.0L10	12E



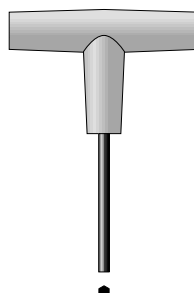
Art.	Cod*
119.012.12H2	11A



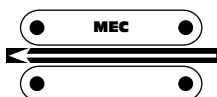
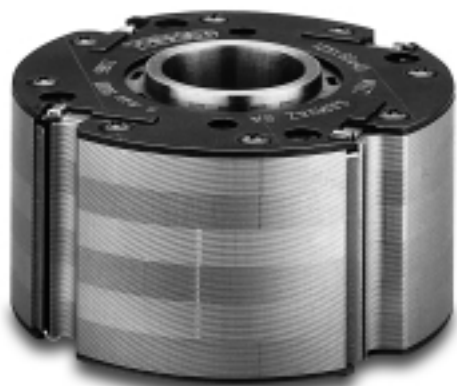
Art.	Cod*
119.014.14H2	11A



Art.	Cod*
200.B02.0T20	12A



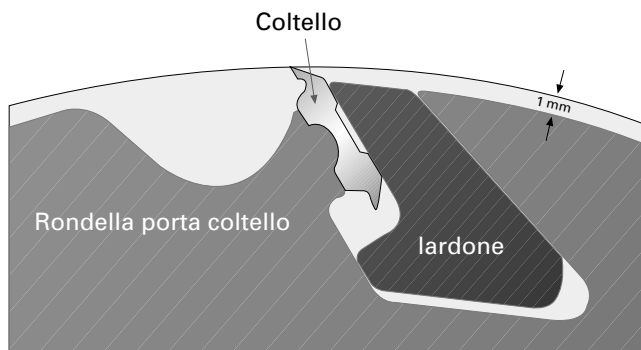
Art.	Cod*
200.C03.0E03	11A



RIVENDITA ART. 105

TESTA PER PIALLARE TERSA® R2000 CONCOLTELLI HS

TERSAR® R2000 PLANING CUTTERHEAD SUPPLIED WITH HS KNIVES
 PORTE - OUTIL À RABOTER TERSAR® R2000 AVEC COUTEAUX EN HS
 HOBELMESSERKOPF TERSAR® R2000 MIT HS MESSER
 CABEZAL PARA CEPILLAR TERSAR® R2000 CON CUCHILLAS HS



ACCIAIO / AVIONAL

D. 100 n. max 11200

D. 125 n. max 9000

D. 140 n. max 8000

Art.	D	B	Z	d	Cod*
105.A01.0000	100	60	3	35	62B
105.A02.0000	100	70	3	35	62H
105.A03.0000	100	80	3	35	63A
105.A04.0000	100	90	3	35	63F
105.A05.0000	100	100	3	35	63I
105.A06.0000	100	110	3	35	64C
105.A07.0000	100	115	3	35	64E
105.A08.0000	100	120	3	35	64H
105.A09.0000	100	130	3	35	65B
105.A10.0000	100	140	3	35	65F
105.A11.0000	100	150	3	35	65J
105.A12.0000	100	160	3	35	66C
105.A13.0000	100	170	3	35	66G
105.A14.0000	100	180	3	35	67A
105.A15.0000	100	190	3	35	67F
105.A16.0000	100	200	3	35	67I
105.A17.0000	100	210	3	35	68B
105.A18.0000	100	220	3	35	68F
105.A19.0000	100	230	3	35	68I
105.A20.0000	100	240	3	35	69C

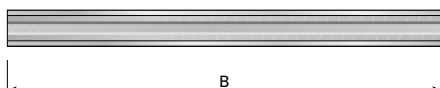
105.B01.0000	125	60	4	40	64A
105.B02.0000	125	70	4	40	64E
105.B03.0000	125	80	4	40	64J
105.B04.0000	125	90	4	40	65C
105.B05.0000	125	100	4	40	65I
105.B06.0000	125	110	4	40	66C
105.B07.0000	125	120	4	40	66G
105.B08.0000	125	130	4	40	67A
105.B09.0000	125	140	4	40	67E
105.B10.0000	125	150	4	40	67I
105.B11.0000	125	160	4	40	68E

Art.	D	B	Z	d	Cod*
105.B12.0000	125	170	4	40	68J
105.B13.0000	125	180	4	40	69D
105.B14.0000	125	190	4	40	69I
105.B15.0000	125	200	4	40	70C
105.B16.0000	125	210	4	40	70H
105.B17.0000	125	220	4	40	71E
105.B18.0000	125	230	4	40	72B
105.B19.0000	125	240	4	40	72G
105.B20.0000	125	250	4	40	73G

105.C01.0000	140	60	4	40-50	64J
105.C02.0000	140	70	4	40-50	65E
105.C03.0000	140	80	4	40-50	66B
105.C04.0000	140	90	4	40-50	66E
105.C05.0000	140	100	4	40-50	67B
105.C06.0000	140	110	4	40-50	67G
105.C07.0000	140	115	4	40-50	67J
105.C08.0000	140	120	4	40-50	68B
105.C09.0000	140	130	4	40-50	68E
105.C10.0000	140	140	4	40-50	68H
105.C11.0000	140	150	4	40-50	69H
105.C12.0000	140	160	4	40-50	70D
105.C13.0000	140	170	4	40-50	71A
105.C14.0000	140	180	4	40-50	71F
105.C15.0000	140	190	4	40-50	72B
105.C16.0000	140	200	4	40-50	72G
105.C17.0000	140	210	4	40-50	73C
105.C18.0000	140	220	4	40-50	74A
105.C19.0000	140	230	4	40-50	74I
105.C20.0000	140	240	4	40-50	75F
105.C21.0000	140	260	4	40-50	77G

RICAMBI · SPARE PARTS · PIECES DE RECHANGE · ERSATZTEILE · RECAMBIOS

Art. 106.000.0000

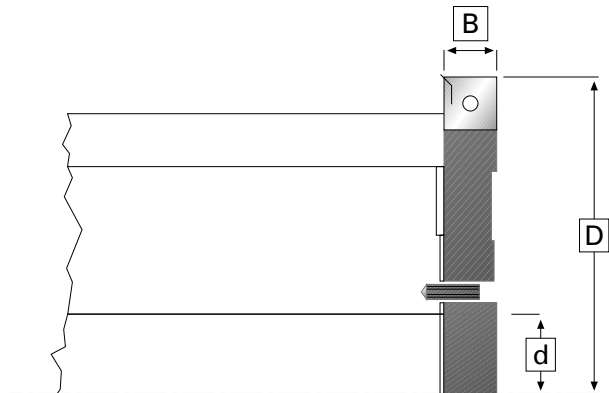
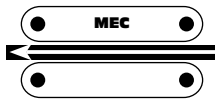


ART. 107



TESTA RASANTE PER TESTE TERSA®

PRE-GROOVING CUTTERHEAD FOR TERSA® CUTTERHEAD
 PORTE - OUTIL DE PRÉ - DÉGAUCHISSAGE POUR TÊTE TERSA®
 MESSERKOPF FÜR FÜHRUNGFAHZ FÜR MESSERKOPF TERSA®
 CABEZAL PARA GALCE GUÍA PARA CABEZAL TERSA®



D. 125 n. max 11000
 D. 146 n. max 9000
 D. 150 n. max 9000
 D. 162 n. max 8000

Art.	D	B	Z	V	d	Cod*
107.001.0000	125	12.5	2	2	35	41I
107.002.0000	146	12.5	2	2	40	42D
107.003.0000	150	12.5	2	2	40	42D
107.004.0000	162	12.5	2	2	40 - 50	42H

RICAMBI · SPARE PARTS · PIECES DE RECHANGE · ERSATZTEILE · RECAMBIOS



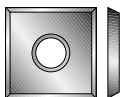
Art.	Cod*
300.D06.0616	10C



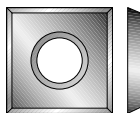
Art.	Cod*
300.C05.0510	10E



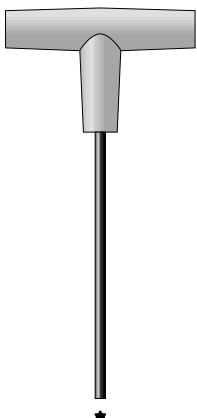
Art.	Cod*
500.B00.0L10	12E



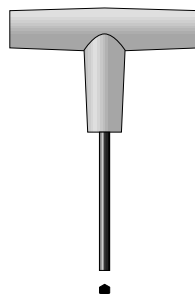
Art.	Cod*
119.012.12H2	11A



Art.	Cod*
119.014.14H2	11A



Art.	Cod*
200.B02.0T20	12A

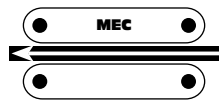
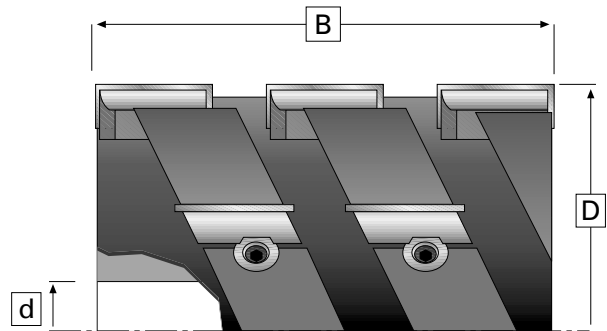


Art.	Cod*
200.C03.0E03	11A

ART. 104

TESTA PER PIALLARE ELICOIDALE

SPIRAL PLANING CUTTERHEAD
 PORTE - OUTIL HÉLICOÏDAL À RABOTER
 SPIRAL-HOBELMESSERKOPF
 CABEZAL HELICOIDAL PARA CEPILLAR



ALU

HW



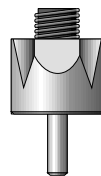
D. 100 n. max 11000
 D. 125 n. max 8500

Art.	D	B	d	Z	Cod*
104.001.0000	100	115	35	15	49I
104.100.130L	100	130	35	18	51E
104.002.0000	100	180	35	24	60C
104.003.0000	125	115	40	15	50A
104.004.0000	125	130	40	18	51G
104.005.0000	125	136	40	18	51I
104.006.0000	125	158	40	21	54A
104.007.0000	125	180	40	24	60E
104.008.0000	125	190	40	27	61G
104.009.0000	125	201	40	27	62A
104.010.0000	125	210	40	30	63B
104.011.0000	125	223	40	30	63F
104.012.0000	125	232	40	33	64G
104.013.0000	125	245	40	36	65I

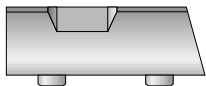
RICAMBI · SPARE PARTS · PIÈCES DE RECHANGE · ERSATZTEILE · RECAMBIOS



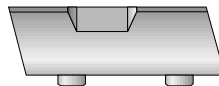
Art.	Cod*
300.D06.0612	10C



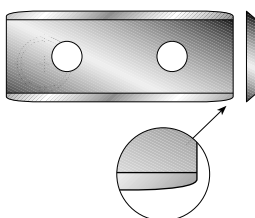
Art.	Cod*
500.A00.0012	12D



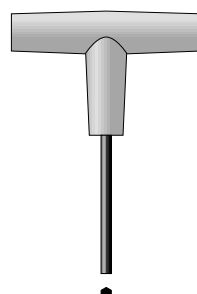
Art.	Cod*
500.C00.0TER	20I



Art.	Cod*
500.C00.0ELI	20D



Art.	Cod*
104.R30.0030	11I

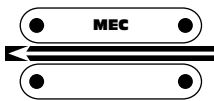
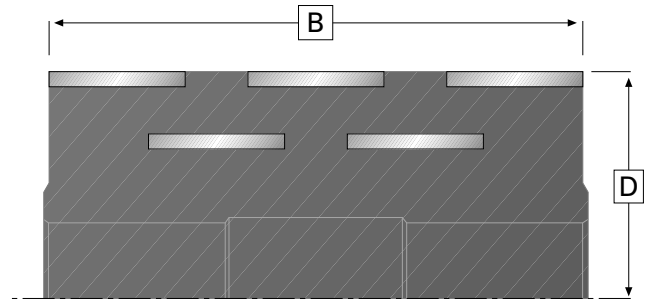


Art.	Cod*
200.C03.0E03	11A

ART. 115

TESTA PER PIALLARE CON COLTELLI ALTERNATI

PLANING CUTTERHEAD WITH ALTERNATE KNIVES
 PORTE - OUTIL À RABOTER AVEC COUTEAUX ALTERNÉS
 HOBELMESSERKOPF MIT ALTERNIERTEN KLINGEN
 CABEZAL PARA CEPILLAR CON CUCHILLAS ALTERNAS



ALU



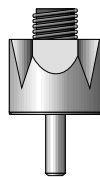
D. 125 n. max 8500

Art.	D	B	d	Z	Cod*
115.001.0000	125	130	40	09	48E
115.002.0000	125	180	40	12	53A
115.003.0000	125	230	40	15	60H
115.004.0000	125	250	40	18	63A

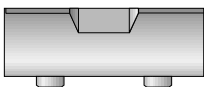
RICAMBI · SPARE PARTS · PIECES DE RECHANGE · ERSATZTEILE · RECAMBIOS



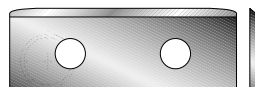
Art.	Cod*
300.D06.0612	10C



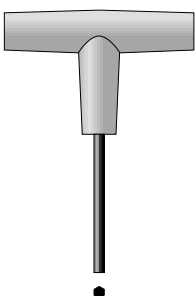
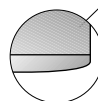
Art.	Cod*
500.A00.0012	12D



Art.	Cod*
500.B00.0L46	12G



Art.	Cod*
115.R50.0050	11J

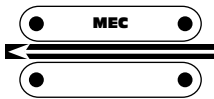
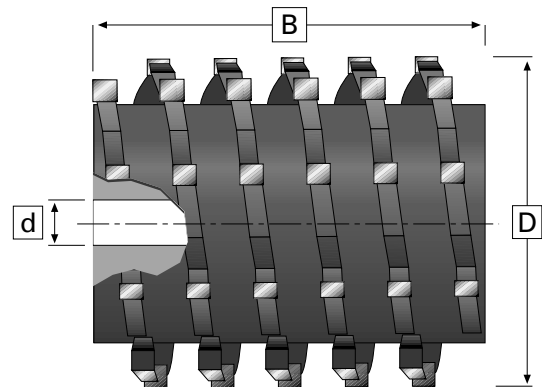


Art.	Cod*
200.C03.0E03	11A

ART. 112

FRESA ELICOIDALE

SPIRAL PLANING CUTTER
FRAISE À CALIBRER, COUPE HELICOÏDALE
SPIRAL-HOBELFRÄSER
FRESA CEPILLADORA HELICOIDAL



HW

D. 100 n. max 11000
D. 125 n. max 9000

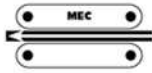
Art.	D	B	d	Z	Cod*
112.001.0000	100	120	35	8	47F
112.002.0000	100	180	35	8	51A
112.003.0000	125	80	40	12	48F
112.004.0000	125	100	40	12	50A
112.005.0000	125	120	40	12	51F
112.006.0000	125	130	40	12	52D
112.007.0000	125	150	40	12	53F
112.008.0000	125	180	40	12	60F
112.009.0000	125	190	40	12	60J
112.010.0000	125	230	40	12	62F
112.011.0000	125	240	40	12	64F
112.012.0000	125	250	40	12	66F

- PER MISURE DIVERSE CHIEDERE OFFERTA
- FOR DIFFERENT MEASURES, ASK FOR AN OFFER
- POUR D'AUTRES MESURES, DEMANDER UNE OFFRE
- FÜR ANDERE ABMESSUNGEN BITTE EIN ANGEBOT VERLANGEN
- PARA MEDIDAS DIFERENTES, SOLICITAR OFERTA



ART. 100

TESTA PER PIALLARE ELICOIDALE
 SPIRAL PLANING CUTTERHEAD
 PORTE-OUTIL HELICOÏDAL À RABOTER
 SPIRAL-HOBELMESSERKOPF
 CABEZAL HELICOÏDAL PARA CEPILLAR



ALU



15 X 15 X 2,5

D. 100 n. max 11000
 D. 125 n. max 9500

Art.	D	B	Z	d
100.100.1005	100	100	18	50
100.100.1003	100	100	18	30
100.120.130L	120	130	39	40
100.120.180L	120	180	54	40
100.120.230L	120	230	69	40
100.125.130L	125	130	39	40
100.125.180L	125	180	54	40
100.125.230L	125	230	69	40

RICAMBI · SPARE PARTS · PIECES DE RECHANGE · ERSATZTEILE · RECAMBIOS



Art.

200.B02.0T20



Art.

100.VIT.0000



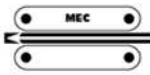
Art.

119.015.1525 | 15x15x2,5



ART. 100/BIS

TESTA PER PIALLARE ELICOIDALE
 SPIRAL PLANING CUTTERHEAD
 PORTE-OUTIL HELICOIDAL À RABOTER
 SPIRAL-HOBELMESSERKOPF
 CABEZAL HELICOIDAL PARA CEPILLAR



ALU

HW



14 X 14 X 2

D. 100 n. max 11000
 D. 125 n. max 9500

Art.	D	B	Z	d
100.B00.1005	100	100	18	50
100.B00.1003	100	100	18	30
100.B20.130L	120	130	39	40
100.B20.180L	120	180	54	40
100.B20.230L	120	230	69	40
100.B25.130L	125	130	39	40
100.B25.180L	125	180	54	40
100.B25.230L	125	230	69	40

RICAMBI · SPARE PARTS · PIECES DE RECHANGE · ERSATZTEILE · RECAMBIOS



Art.

200.B02.0T20



Art.

100.VIT.0000



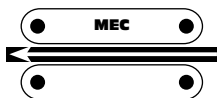
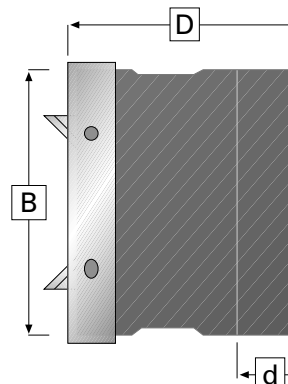
Art.

119.015.1525 | 14x14x2



TESTA PER PIALLARE CON COLTELLI REVERSIBILI IN HS E LEVASPIGOLI

PLANING CUTTERHEAD SUPPLIED WITH DISPOSABLE HS KNIVES AND WITH EDGE-BREAKERS
 PORTE - OUTIL À RABOTER AVEC COUTEAUX RÉVERSIBLES EN HS ET AVEC BRISE - ARÊTES
 HOBELMESSERKOPF MIT KANTENBRECHERN KOMPLET MIT HS-WENDEMESSER
 CABEZAL PARA CEPILLAR CON MATA-CANTOS E CUCHILLAS REVERSIBLES DE HS



ALU



D. 125 n. max 8000



Art.	D	B	d	Z	LS	Cod*
114.A01.0000	125	130	40	2	2 + 2	54A
114.A02.0000	125	140	40	2	2 + 2	54D
114.A03.0000	125	180	40	2	2 + 2	55F
114.A04.0000	125	190	40	2	2 + 2	55J
114.A05.0000	125	230	40	2	2 + 2	61F
114.A06.0000	125	240	40	2	2 + 2	61I
114.B01.0000	125	130	40	2	2 + 2	54A
114.B02.0000	125	140	40	2	2 + 2	54D
114.B03.0000	125	180	40	2	2 + 2	55F
114.B04.0000	125	190	40	2	2 + 2	55J
114.B05.0000	125	230	40	2	2 + 2	61F
114.B06.0000	125	240	40	2	2 + 2	61I
114.C01.0000	125	130	40	2	2 + 2	54A
114.C02.0000	125	140	40	2	2 + 2	54D
114.C03.0000	125	180	40	2	2 + 2	55F
114.C04.0000	125	190	40	2	2 + 2	55J
114.C05.0000	125	230	40	2	2 + 2	61F
114.C06.0000	125	240	40	2	2 + 2	61I

- PER MISURE DIVERSE E CORPO IN ACCIAIO CHIEDERE OFFERTA
- FOR DIFFERENT MEASURES AND STEEL BODY, ASK FOR AN OFFER
- POUR D'AUTRES MESURES ET CORPS EN ACIER, DEMANDER UNE OFFRE
- FÜR ANDERE ABMESSUNGEN UND STHALKÖRPER BITTE ANGEHOT EINHOLEN
- PARA MEDIDAS DIFERENTES Y CAJA DE ACERO, SOLICITAR OFERTA

TESTA PER PIALLARE CON COLTELLI REVERSIBILI IN HS E LEVASPIGOLI

PLANING CUTTERHEAD SUPPLIED WITH DISPOSABLE HS KNIVES AND WITH EDGE-BREAKERS
 PORTE - OUTIL À RABOTER AVEC COUTEAUX RÉVERSIBLES EN HS ET AVEC BRISE - ARÊTES
 HOBELMESSERKOPF MIT KANTENBRECHERN KOMPLET MIT HS-WENDEMESSER
 CABEZAL PARA CEPILLAR CON MATA-CANTOS E CUCHILLAS REVERSIBLES DE HS

RICAMBI · SPARE PARTS · PIECES DE RECHANGE · ERSATZTEILE · RECAMBIOS



Art.	Cod*
300.D06.0620	10C
300.D08.0820	10C



Art.	Cod*
300.E12.0018	10E



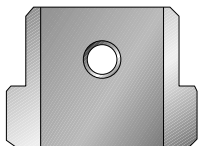
Art.	Cod*
300.C05.0515	10E



Art.	Cod*
600.F45.2SMA	21F
600.F15.2SMA	21I
600.F03.2SMA	21I



Art.	Cod*
600.F45.2DMA	21F
600.F15.2DMA	21I
600.F03.2DMA	21I

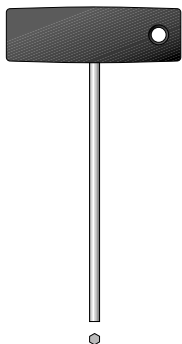


Art.	Cod*
500.LMA.REGO	24D

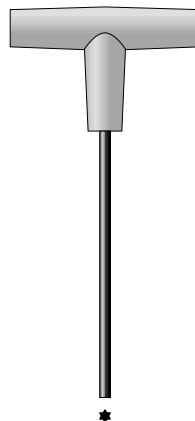
Art. 111.000.0000



Art. 500.F00.0000



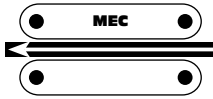
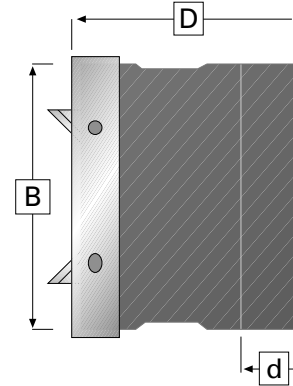
Art.	Cod*
200.C03.0E03	11A
200.D04.0E04	11E



Art.	Cod*
200.B02.0T20	12A

TESTA PER PIALLARE CON COLTELLI RIAFFILABILI IN HS CON LEVASPIGOLI

PLANING CUTTERHEAD SUPPLIED WITH HS KNIVES TO BE RE-SHARPENED AND WITH EDGE-BREAKERS
 PORTE - OUTIL À RABOTER AVEC COUTEAUX AFFUTABLES EN HS ET AVEC BRISE - ARÊTES
 HOBELMESSERKOPF MIT KANTENBRECHERN KOMPLET MIT HS SCHLEIFBAHREN HOBELMESSERN
 CABEZAL PARA CEPILLAR CON MATA-CANTOS E CUCHILLAS REAFILABLES DE HS



ALU



D. 125 n. max 7000



Art.	D	B	d	Z	LS	Cod*
114.BIS.0A01	125	130	40	2	2 + 2	54A
114.BIS.0A02	125	140	40	2	2 + 2	54D
114.BIS.0A03	125	180	40	2	2 + 2	55F
114.BIS.0A04	125	190	40	2	2 + 2	55J
114.BIS.0A05	125	230	40	2	2 + 2	61F
114.BIS.0A06	125	240	40	2	2 + 2	61I
114.BIS.0B01	125	130	40	2	2 + 2	54A
114.BIS.0B02	125	140	40	2	2 + 2	54D
114.BIS.0B03	125	180	40	2	2 + 2	55F
114.BIS.0B04	125	190	40	2	2 + 2	55J
114.BIS.0B05	125	230	40	2	2 + 2	61F
114.BIS.0B06	125	240	40	2	2 + 2	61I
114.BIS.0C01	125	130	40	2	2 + 2	54A
114.BIS.0C02	125	140	40	2	2 + 2	54D
114.BIS.0C03	125	180	40	2	2 + 2	55F
114.BIS.0C04	125	190	40	2	2 + 2	55J
114.BIS.0C05	125	230	40	2	2 + 2	61F
114.BIS.0C06	125	240	40	2	2 + 2	61I

- PER MISURE DIVERSE E CORPO IN ACCIAIO CHIEDERE OFFERTA
- FOR DIFFERENT MEASURES AND STEEL BODY, ASK FOR AN OFFER
- POUR D'AUTRES MESURES ET CORPS EN ACIER, DEMANDER UNE OFFRE
- FÜR ANDERE MASSE UND STHALKÖRPER, EIN ANGEBOT VERLANGEN
- PARA MEDIDAS DIFERENTES Y CAJA DE ACERO, SOLICITAR OFERTA

TESTA PER PIALLARE CON COLTELLI REVERSIBILI IN HS E LEVASPIGOLI

PLANING CUTTERHEAD SUPPLIED WITH DISPOSABLE HS KNIVES AND WITH EDGE-BREAKERS
 PORTE - OUTIL À RABOTER AVEC COUTEAUX RÉVERSIBLES EN HS ET AVEC BRISE - ARÊTES
 HOBELMESSERKOPF MIT KANTENBRECHERN KOMPLET MIT HS-WENDEMESSER
 CABEZAL PARA CEPILLAR CON MATA-CANTOS E CUCHILLAS REVERSIBLES DE HS

RICAMBI · SPARE PARTS · PIECES DE RECHANGE · ERSATZTEILE · RECAMBIOS



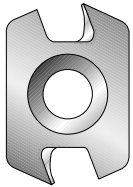
Art.	Cod*
300.D06.0620	10C
300.D08.0820	10C



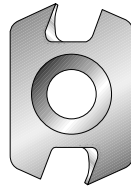
Art.	Cod*
300.E12.0018	10E



Art.	Cod*
300.C05.0515	10E



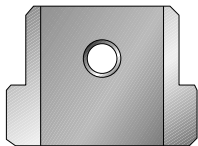
Art.	Cod*
600.F45.2SMA	21F
600.F15.2SMA	21I
600.F03.2SMA	21I



Art.	Cod*
600.F45.2DMA	21F
600.F15.2DMA	21I
600.F03.2DMA	21I



Art.	Cod*
300.E05.0175	10E

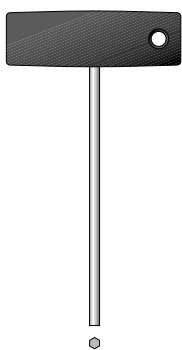
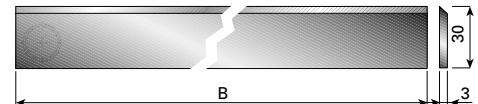


Art.	Cod*
500.LMA.REGO	24D

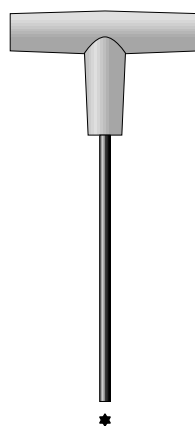
Art. 500.E00.0000



Art. 103.000.0000



Art.	Cod*
200.C03.0E03	11A
200.D04.0E04	11E

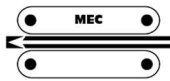


Art.	Cod*
200.B02.0T20	12A

ART. 109

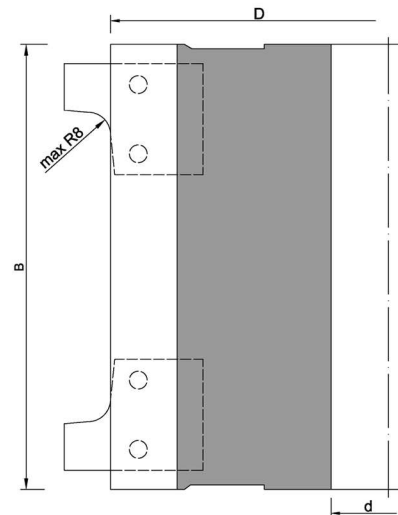
TESTA PER PIALLARE CON COLTELLI REVERSIBILI IN HS E LEVASPIGOLI

PLANING CUTTERHEAD SUPPLIED WITH DISPOSABLE KNIVES AND EDGE-BREAKERS
PORTE-OUTIL A RABOTER AVEC COUTEAUX REVERSIBLES EN HS ET AVEC BRISE ARETES
HOBELMESSERKOPF MIT KANTENBRECHERN KOMPLETT MIT HS-WENDERMESSER
CABEZAL PARA CEPILLAR CON MATA-CANTOS E CON CUCHILLAS REVERSIBLES DE HS



ALU

D. 125 n. 6000 - 8000

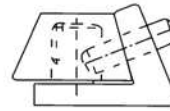


Art.	D	B	d	Z	LS
109.125.1300	125	130	40	2	2+2
109.125.1400	125	140	40	2	2+2
109.125.1900	125	190	40	2	2+2
109.125.2300	125	230	40	2	2+2
109.125.2400	125	240	40	2	2+2

- IN CASO DI ORDINE INDICARE IL TIPO DI LS
- WHEN ORDERING PLEASE STATE THE LS
- DANS LA COMMANDE INDIQUER LES LS
- BITTE GEBEN SIE, BEI JEDER BESTELLUNG, DIE LS
- EN LO PEDIDO INDICAR EL TIPO DE LS



Art.
200.B02.0T20



Art.
109.R00.CARR



Art.
200.D03.0E03
200.D04.0E04



Art.
300.E12.0018



Art.
300.D06.0620
300.D08.0820



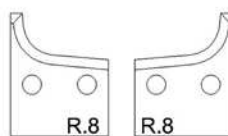
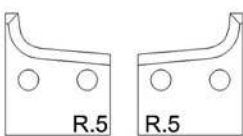
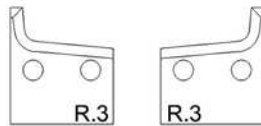
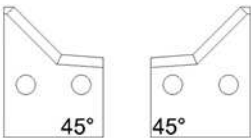
Art.
300.C05.0515



Art.
500.L00.0000



Art.
111.001.0060

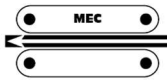
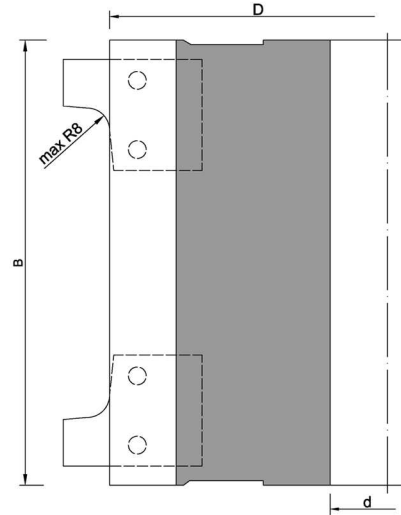


Art.	Rot.	Dis.
109.R0D.0045	DX	45°
109.R0D.0R03	DX	R=3
109.R0D.0R05	DX	R=5
109.R0D.0R08	DX	R=8
109.R0S.0045	SX	45°
109.R0S.0R03	SX	R=3
109.R0S.0R05	SX	R=5
109.R0S.0R08	SX	R=8

ART. 109/BIS

TESTA PER PIALLARE CON COLTELLI REVERSIBILI IN HS E RIAFFILABILI

PLANING CUTTERHEAD SUPPLIED WITH RESHARPENABLE KNIVES AND EDGE-BREAKERS
 PORTE-OUTIL A RABOTER AVEC COUTEAUX REAFFUTABLES EN HS ET AVEC BRISE ARETES
 HOBELMESSERKOPF MIT KANTENBRECHERN KOMPLETT MIT HS-HOBELMESSER
 CABEZAL PARA CEPILLAR CON MATA-CANTOS E CON CUCHILLAS DE HS



ALU

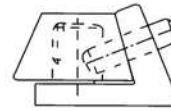
D. 125 n. 6000 - 8000

Art.	D	B	d	Z	LS
109.125.130B	125	130	40	2	2+2
109.125.140B	125	140	40	2	2+2
109.125.190B	125	190	40	2	2+2
109.125.230B	125	230	40	2	2+2
109.125.240B	125	240	40	2	2+2

- IN CASO DI ORDINE INDICARE IL TIPO DI LS
- WHEN ORDERING PLEASE STATE THE LS
- DANS LA COMMANDE INDIQUER LES LS
- BITTE GEBEN SIE, BEI JEDER BESTELLUNG, DIE LS
- EN LO PEDIDO INDICAR EL TIPO DE LS



Art.
200.B02.0T20



Art.
109.R00.CARR



Art.
300.E05.0175



Art.
300.E12.0018



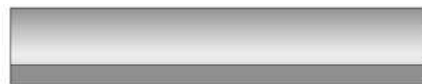
Art.
200.D03.0E03
200.D04.0E04



Art.
300.D06.0620
300.D08.0820



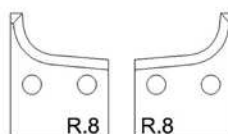
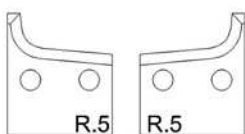
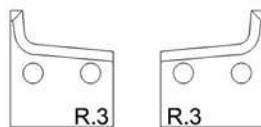
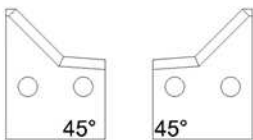
Art.
300.C05.0515



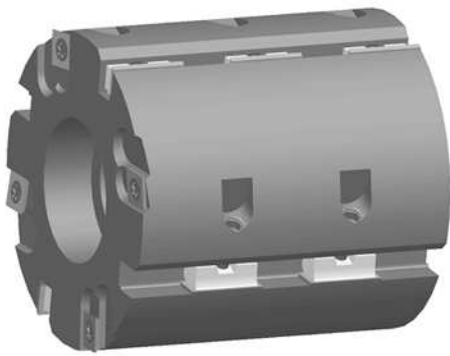
Art.
500.E00.0000



Art.
103.000.0000



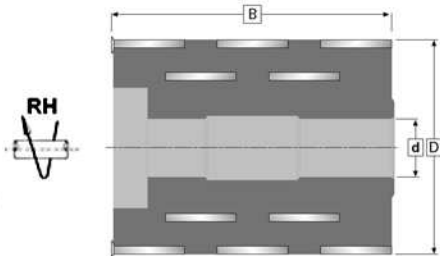
Art.	Rot.	Dis.
109.R0D.0045	DX	45°
109.R0D.0R03	DX	R=3
109.R0D.0R05	DX	R=5
109.R0D.0R08	DX	R=8
109.R0S.0045	SX	45°
109.R0S.0R03	SX	R=3
109.R0S.0R05	SX	R=5
109.R0S.0R08	SX	R=8



ART. 147

TESTE TENONTRICI MANUALI
CUTTERHEADS FOR MANUAL TENONIG MACHINES
PORTE-OUTILS POUR TENONNEUSE MANUELLE
MESSERKOPFE FÜR ZAPFENMASCHINEN
CABEZALES PARA MAQUINA ESPIGADORA MANUAL

Art.	D	B	d		V	Z
147.086.1000	86	100	25	2+2	4	8
147.100.1000	100	100	30	2+2	4	8
147.100.1200	100	120	25	2+2	4	10
147.125.1325	125	130	25	2+2	4	10
147.125.1330	125	130	30	2+2	4	10
147.125.1335	125	130	35	2+2	4	10
147.125.1525	125	150	25	2+2	4	12
147.125.1530	125	150	30	2+2	4	12
147.125.1535	125	150	35	2+2	4	12

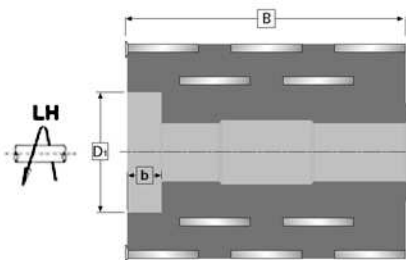


ALU



HW

- IN CASO DI ORDINE INDICARE LE DIMENSIONI D1 E b
- WHEN ORDERING PLEASE STATE THE DIMENSIONS D1 AND b
- DANS LA COMMANDE INDIQUER LES DIMENSIONS D1 ET b
- BITTE GEBEN SIE, BEI JEDER BESTELLUNG, DIE ABMESSUNG D1 UND b AN
- EN LO PEDIDO INDICAR LAS MISURAS D1 Y b



D.86 n.9000-12300
D.100 n.7700-10500
D.125 n.6200-8400

RICAMBI · SPARE PARTS · PIECES DE RECHANGE · ERSATZTEILE · RECAMBIOS



Art.
500.B00.0L26

Art.
500.A00.0012



Art.
300.D06.0620
300.D08.0820

Art.
300.C05.0515



Art.
119.014.02H2

Art.
119.030.12H2



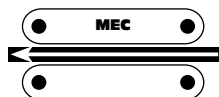
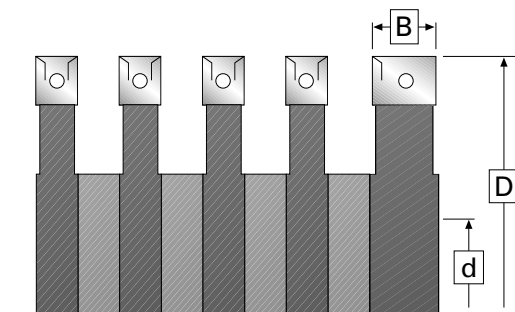
Art.
200.D03.0E03
200.D04.0E04

Art.
200.B02.0T20



GRUPPI PER PIANI RIGATI CON COLTELLI REVERSIBILI

GROOVING BED CUTTERHEADS
 PORTE - OUTILS POUR RAINURES DE GUIDAGE
 NUTENBETT - MESSERKÖPFE
 CABEZALES PARA RANURAS GUÍA



D. 125 n. max 11000
 D. 140 n. max 9000

Art.	D	B	d	Z	V	Cod*
122.125.4409	125	9	40	4	4	41G
122.125.4410	125	10	40	4	4	41G
122.125.4412	125	12,5	40	4	4	41G
122.125.4220	125	20	40	4	2	41E
122.140.4412	140	12,5	40	4	4	41G
122.140.4220	140	20	40	4	2	41E

RICAMBI · SPARE PARTS · PIECES DE RECHANGE · ERSATZTEILE · RECAMBIOS



Art.	B	Cod*
300.D05.0516	9	10C
300.D05.0516	10	10C
300.D06.0616	12,5	10C
300.D08.0816	20	10C



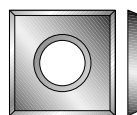
Art.	Cod*
300.C05.0510	10E



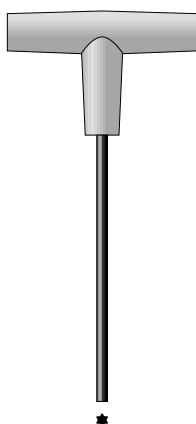
Art.	B	Cod*
500.B00.0L07	9	12E
500.B00.0L07	10	12E
500.B00.0L10	12,5	12E
500.B00.0L18	20	12E



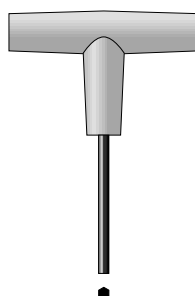
Art.	B	Cod*
119.075.12H2	9	11A
119.009.12H2	10	11I
119.012.12H2	12,5	11A
119.020.12H2	20	11A



Art.	Cod*
119.014.14H2	11A



Art.	Cod*
200.B02.0T20	12A



Art.	B	Cod*
200.C25.0E25	9	11A
200.C03.0E03	10	11A
200.C04.0E04	12,5	11A

*